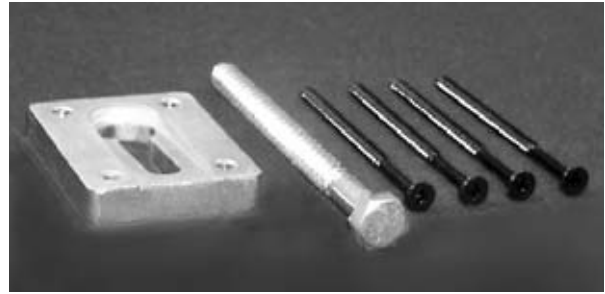


Newel Attaching Hardware



F3000 Plug 1"

This product is available in oak, maple, beech, cherry and hemlock. Please note that all Fitts Industries, Inc. fittings are packaged with plugs.



F3015 Keylock Newel Attaching System

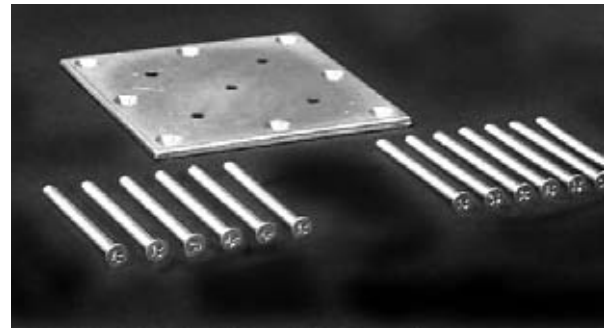
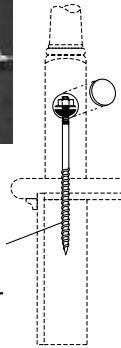
This is a non-stock part for Fitts Industries, Inc., but can be ordered upon request.



F3005 Newel Bolt 10"

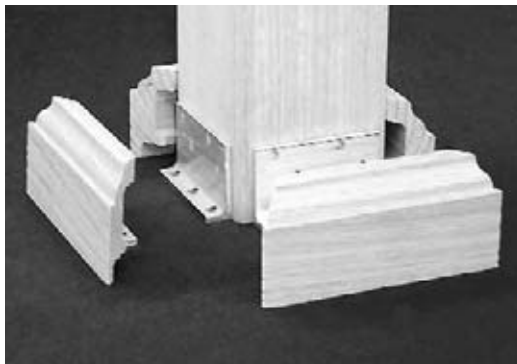
Enables you to mount a newel to the finished floor without additional framing, mortising or coping.

F3005
Newel
Fastner



F3014 Plate Mount Newel Attaching System

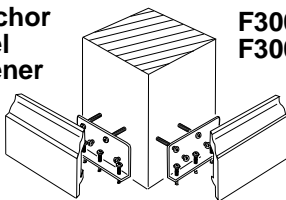
Plate mount newel attaching hardware securely fastens the newel under carpet, over concrete, or over the finished floor.



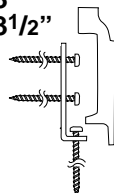
F3007, F3008 L-Anchor Newel Fastener

The L-shaped mounting plates attach the four sides of the base of the newel to the flooring. The assembly includes molding to cover the exposed mounting plates. This product works with 3" (F3007) and 3-1/2" (F3008) newels and is offered in oak, maple, cherry & *hemlock. (*Hemlock L-Anchor is 3-1/4")

L-Anchor
Newel
Fastener



F3007-3"
F3008-3 1/2"



Rail Related Hardware



F3001 Rail Bolt

Double threaded $\frac{5}{16}$ " bolt with crown nut, flat washer, and cupped washer.

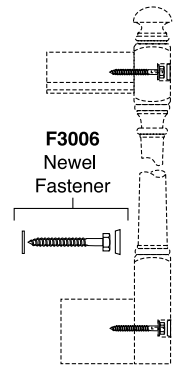
Rail Related Hardware



F3013 Rail Bolt Driver
Threaded rail bolt driver. Fits all standard drills.



F3006 Newel Fastener
Fastens hand rail to newel post



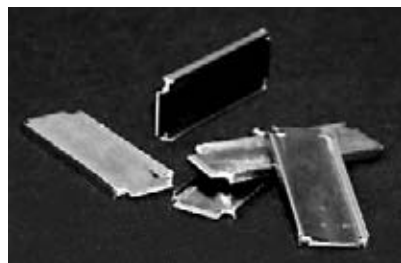
F3000 Plugs 1"
This product is available in oak, maple, beech, cherry and hemlock. Please note that all Fitts Industries, Inc. fittings are packaged with plugs.



F3011 Rail Bolt Wrench
This three in one device provides a simplified answer for those "hard-to-get" situations. The tool serves as a wrench, a driver and a patented tightening system all in one.



F3002 Wall Rail Bracket
Standard wall rail bracket. Used to attach rail to finished wall.



F3004 Clamp Nails
Nails often used to attach fittings to rail.



F3010 Solid Brass Wall Bracket
Heavy duty, bright brass, wall bracket used to attach rail to finished wall.

Baluster Attaching Hardware



F3003-1 Baluster Fasteners

2-7/16" x 5/16" Double threaded baluster fastener.



F3009 Baluster Fastener Driver

Threaded driver that fits standard drills.

Wrought Iron Attaching Hardware



F13200 Injector Gun

Heavy-duty injector gun used for epoxy application.



F13200-NZ Injector Gun Nozzle

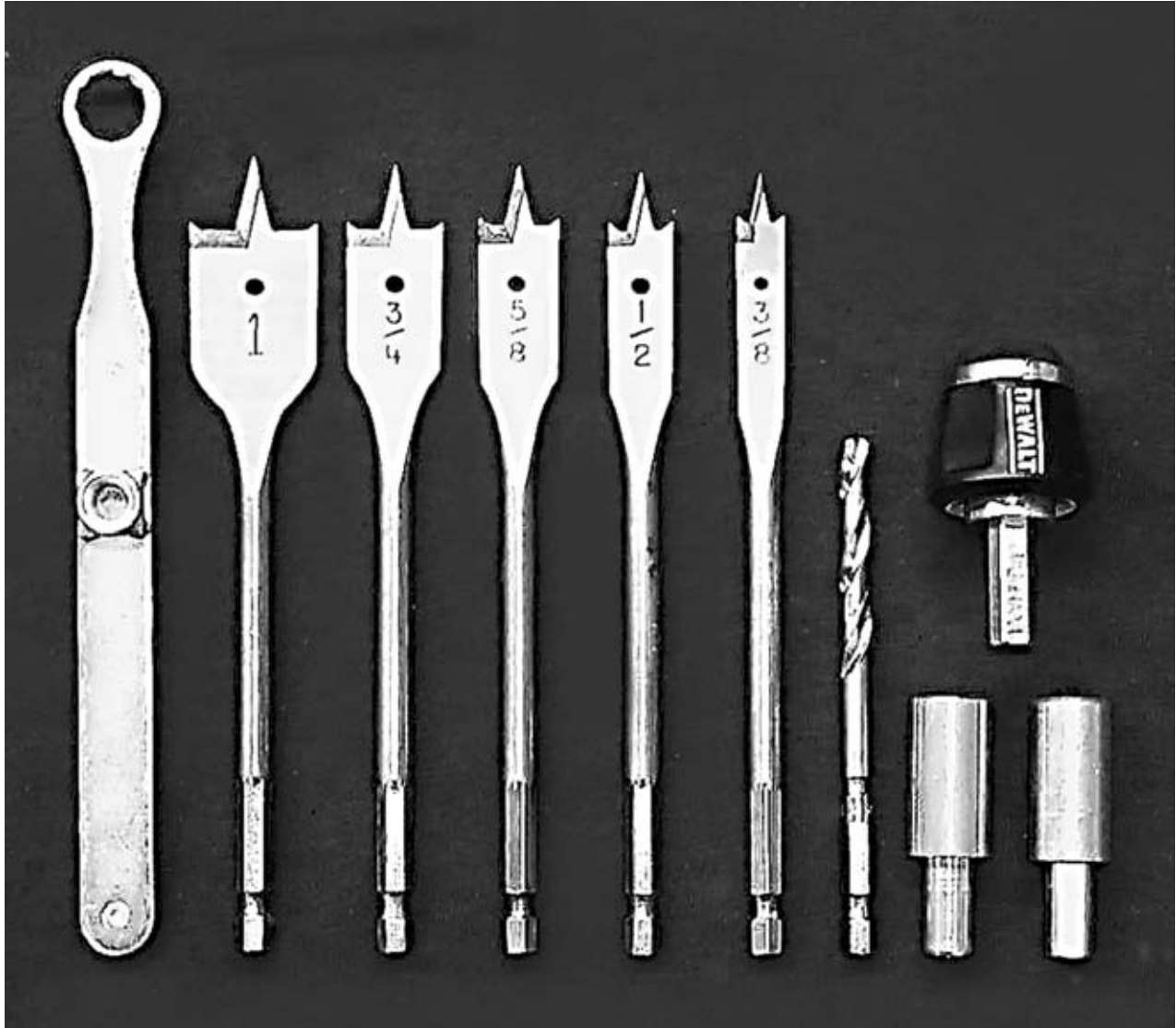
Specially designed static mixer nozzle mixes the epoxy resin and the hardener during application.



F13200-EF Epoxy

One 18 oz. cartridge for approximately 40-50 anchor points. (Baluster tops or bases). Epoxy is an epoxy resin and a hardener.

Miscellaneous



F3020 Installer's Toolkit

Fitts' installer toolkit contains the rail bolt wrench, bits and drivers used during the installation process.

The Kit includes:

- Heavy Duty Carrying Case
- Rail bolt wrench
- 1 1/2" Bit (*not pictured)
- 1" Bit
- 3/4" Bit
- 5/8" Bit
- 1/2" Bit
- 3/8" Bit
- 1/4" Twist Bit
- Quick Change Attachment
- Rail Bolt Driver
- Baluster Fastener Driver